



COMMUNITY SERVICES

Q

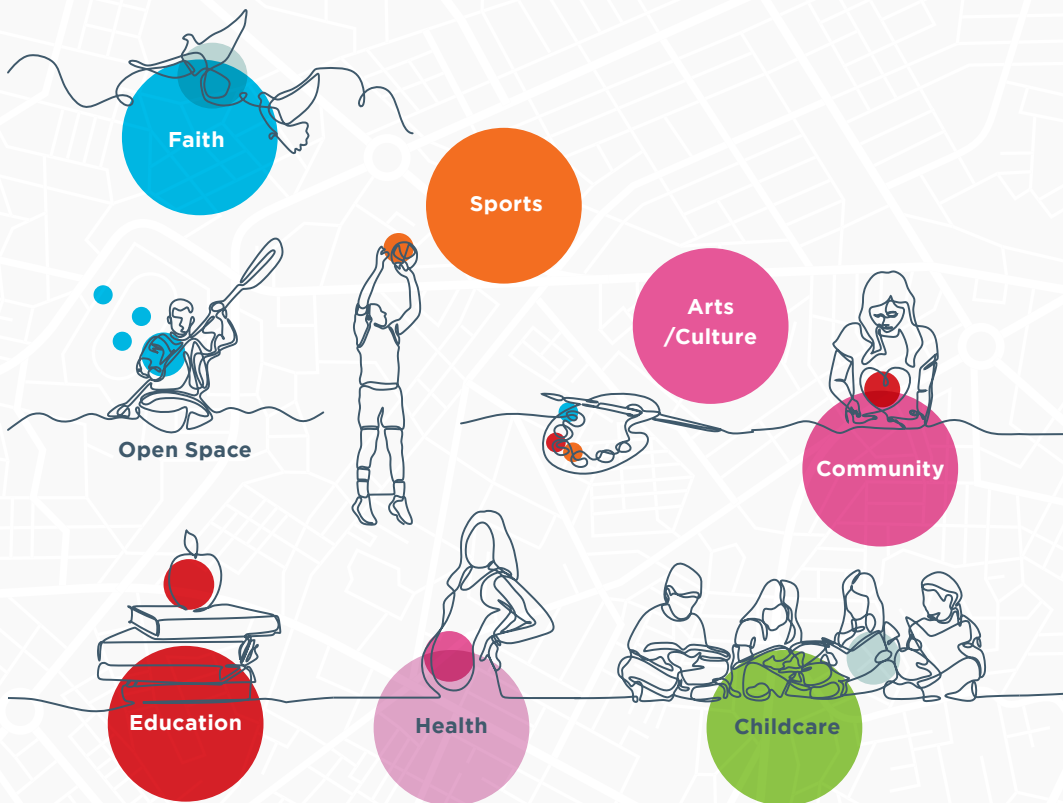
What measures should the plan put in place to ensure key community infrastructure is in place?

A Development Plan is required to include objectives for the provision of services to the community. This **community infrastructure** includes services and facilities **for health, wellbeing and education**. An audit of the existing and the **necessary community infrastructure and facilities** for the different areas will help to inform a targeted policy approach and to **provide** the necessary infrastructure in tandem **with new development** in the County.

Community infrastructure facilities themselves can provide a **platform** for **community and social interaction**.

Ideally such **facilities** would be **provided** within each **area** within the county and **accessible to all** citizens.

Creating a more **socially inclusive** county by **alleviating social exclusion, poverty and deprivation** is a challenge which needs to be a policy consideration for all themes within the Plan. The integration of planning with social, community and cultural requirements of an area is one of the considerations which will be important in the Plan making process.



South Dublin – Delivery of Services

South Dublin has a broad range of community services across the county. Since 2016, 8 new **primary schools** and 1 new **secondary school** have been delivered across the county. Planning permission has also been granted for the expansion of TU Dublin - Tallaght Campus. **New libraries** are to open soon in Tymon and North Clondalkin. Recreation facilities are being upgraded with a **new swimming pool** approved for

Griffeen Park in Lucan. Across the County the council maintains large **regional parks** and is constantly striving to meet the needs of different sections of the community, for instance, by bringing in **natural play areas** such as that approved along the River Dodder. Funding has been secured to commence 2 large **new parks** in Adamstown, Airlie Park and Tandy's Lane Park.



Local Community Development Committee (LCDC)

The **LCDC** for the county pulls together a variety of stakeholders who work on behalf of the community. It plays a key role in the preparation of the **Local Economic and Community Plan (LECP)**. The LECP is a six-year plan containing measures to **promote and support community and economic development** in our county including **social inclusion, health and wellbeing**. The LECP is a collaborative action plan with set goals. The **Development Plan** and the **LECP** will **work together** to achieve agreed **goals**.



Delivery of Community Facilities



Accessibility /Inclusion



Maintenance of Cultural/ Natural Heritage



New North Clondalkin and Tymon libraries



Further development of Tallaght Stadium



DELIVERY: The provision of high-quality physical, environmental and social infrastructure is critical in order to secure economic investment and create sustainable communities where people can enjoy a good quality of life.